

AESCO/MADSEN[®]



CFM-160 Counterflow Drum Mix Asphalt Plant



AESCO/MADSEN Model CFM-160 Portable Counterflow Drum Mix Plant

AESCO/MADSEN's Model CFM-160 Counterflow Asphalt Plant is a highly portable asphalt plant to meet today's air pollution requirements. It is 68 inches in diameter by 32 feet long, and can produce up to 160 tph of asphalt mix. Based on 300-degree mix, 70-degree ambient and 750 feet elevation.

The **Model CFM-160** combines the scale conveyor, counterflow drum, knockout box and baghouse on one trailer frame—eliminating truck loads for easy set-up and lower transportation costs.

The **Model CFM-160** has a folding scale conveyor that can be fed by a 3 or 4-bin cold feed system. This conveyor has a belt scale mounted on it and weighs the aggregate before it enters the drum. The drum has a high efficiency burner mounted inside the drum to heat the aggregate. A RAP (recycle asphalt pavement) collar is mounted to the drum to accept the RAP material. A knockout box is mounted at the feed end of the counterflow drum. It takes out the larger dust particles in the air stream, which reduces the workload on the baghouse. The baghouse is connected to the knockout box and accepts the finer dust particles. This dust drops into the baghouse hopper and is augered to the RAP collar mounted on the drum.



AESCO/MADSEN can supply a 3-bin cold feed or a 4-bin cold feed system depending on mix designs.

Production Capacity*

4% Moisture	180 TPH
5% Moisture	160 TPH
6% Moisture	140 TPH

***Based on 300-degrees Fahrenheit mix temperature, 750' elevation, 70-degree ambient temperature.**



The knockout box takes out larger dust particles before they go to the baghouse.

The larger dust particles from the knockout box are augered to the baghouse and combined with the baghouse dust to auger into the RAP collar.

The dust, aggregate, asphalt and RAP are all combined and mixed behind the burner flame. This eliminates the "blue smoke" caused by parallel flow drum mix plants. Also, with lower stack temperatures fuel consumption is lower. The plant easily converts to warm mix asphalt, thus saving additional fuel.



AESCO/MADSEN's 80-Ton Self-Erect Silo, Model WM-80, erects in 15 minutes. No cranes are needed!

AESCO/MADSEN's manufactures two self-erecting silos. The series "WM" has a 50-ton and an 80-ton capacity silos. The "WM" series of self-erecting silos come complete with drag elevator, silo, hydraulic erection package and portability package. These two silos can be a perfect fit for the CFM-160.

All the motor controls and computer controls are housed in the 8 foot by 16 foot control van. This keeps all the electrical components under cover, and out of the weather.

All control and motor cables plug-in to the control van for easy and fast setup.

Computerized blending controls are mounted inside the 8 foot x 16 foot van. The computerized controls vary the speed of a variable speed drive mounted on the asphalt pump for excellent accuracy, as well controlling the feed bin and RAP formulas.



AESCO/MADSEN's deluxe 8' x 16', control van.



Aggregate scale conveyor is mounted to the dryer frame for lower transportation costs.

Dust from the baghouse and the knockout box is fed into the recycle collar. The dust tipple valve is mounted to the recycle asphalt pavement (RAP) collar. The auger feeds the dust from the baghouse and knock-out box into the counterflow mixer.



Dust tipple valve feeds the dust back into the mixer from the knockout box and baghouse.

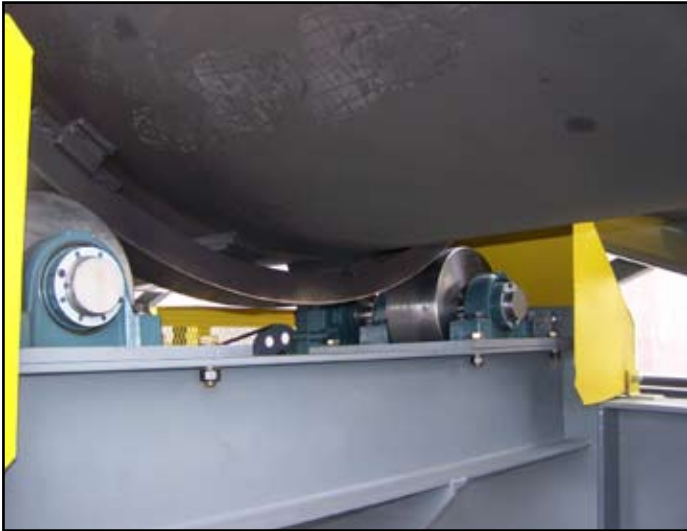


HRB-384 dryer mounted baghouse for lower transportation costs.

The aggregate scale conveyor is mounted on the same frame as the counterflow drum and baghouse. This lowers transportation costs. The aggregate belt scale is mounted on this conveyor and is interlocked to the computerized blending controls for accurate proportioning of the aggregate and asphalt.

AESCO/MADSEN's HRB-384

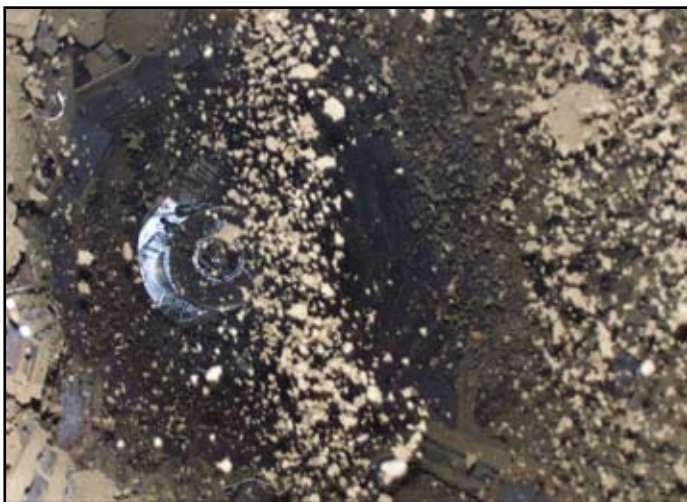
Baghouse is mounted on the same frame as the drum. The baghouse has an additional built-in knockout box and a baffled air inlet to protect the bags from abrasion. Wide-bag spacing eliminates dust re-entrainment and all of these features lowers pressure drops and horse power requirements.



Dryer trunnion drive system.



The CFM-160 can also produce warm mix asphalt and can be supplied with an asphalt tank from 15,000 gallons up to 30,000 U.S. gallons.



This is a view of dense veiling of aggregate inside the drum. This provides excellent heat transfer for lower fuel consumption.

The **CFM-160** is trunnion driven with two, 30-HP motors. One piece, forged tires are mounted to the drum shell. Two thrust idlers are mounted to the frame to keep the drum in perfect alignment. Each trunnion assembly has a shaft-mounted reducer with two pillow block bearings that support each trunnion.

AESCO/MADSEN manufactures a complete line of stationary, portable and vertical asphalt storage tanks. These tanks are engineered and built for maximum heat efficiency. Capacities range from 15,000 to 30,000 U.S. gallons.

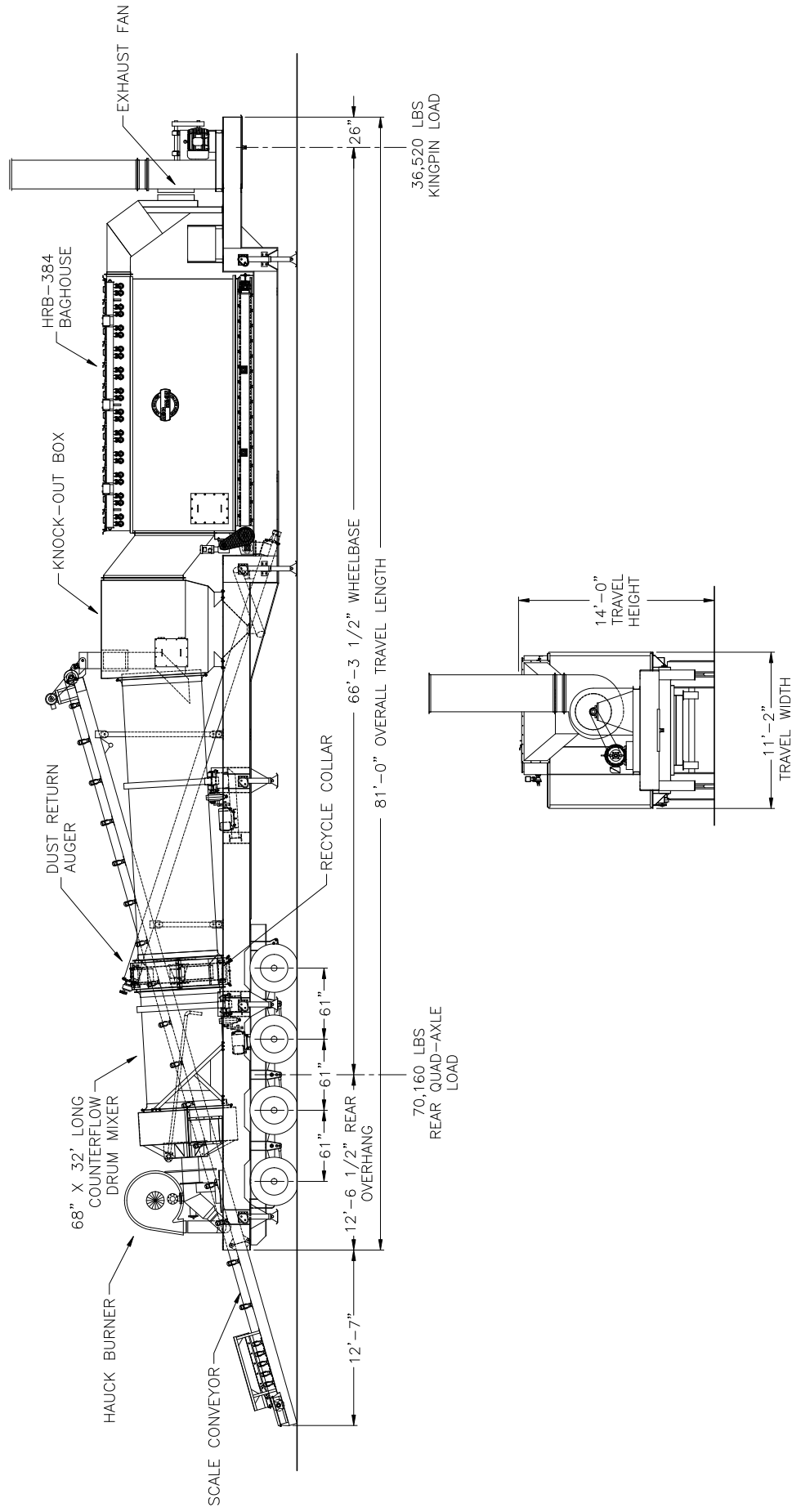
AESCO/MADSEN asphalt tanks are thoroughly insulated with an aluminum cover. All models are mounted on a rugged structural under frame, and are engineered to meet a contractor's demanding requirements.

This tank is engineered and built for maximum heat efficiency with a unitized electric heater that carries a five-year element warranty.

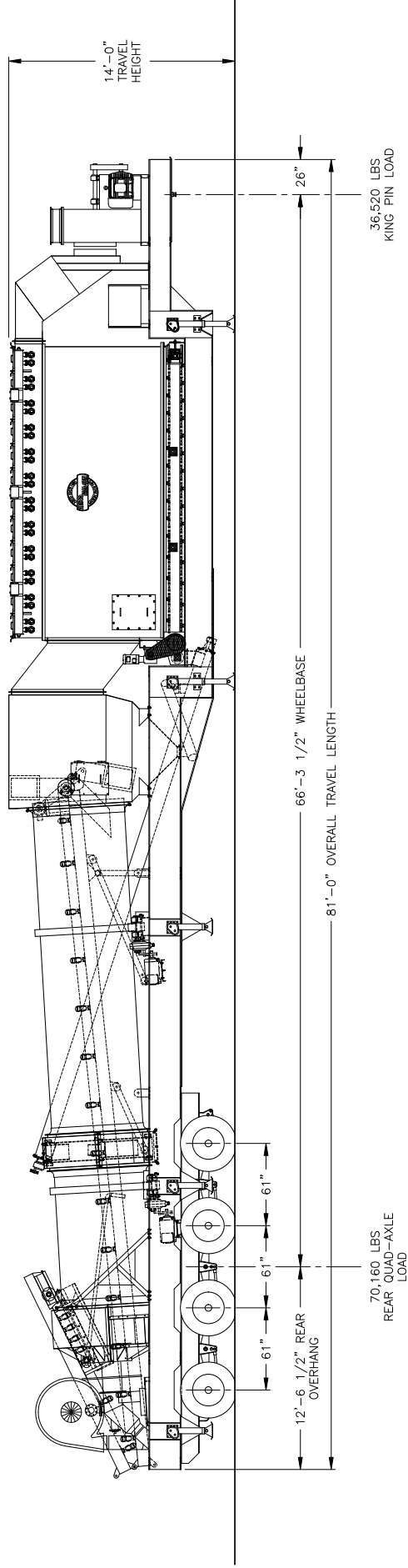
AESCO/MADSEN asphalt tanks can also be supplied with coiled or direct fired heating systems. The tank has automatic temperature controls, flanged inlet, outlet, fill and drain lines. The internal fill line is complete with anti-siphon feature and the internal overflow line has an external discharge near ground level. This asphalt tank provides years of trouble free and quiet operation.

AESCO/MADSEN's SJ2 grid veiling flights mounted inside the counterflow drum deliver maximum drying efficiency and reduced fuel consumption. Here the photo shows the dense veiling of aggregate inside the dryer.

CFM-160 Counterflow Drum Mix Asphalt Plant



CFM-160 Counterflow Drum Mix Asphalt Plant



Travel View with Scale Conveyor Stowed



Call or Email Your AESCO/MADSEN Sales Rep Today
253-939-4150 • sales@aescomadsen.com



www.aescomadsen.com
1531 20th Street Northwest • Auburn, Washington 98001-3422